

Product Catalog

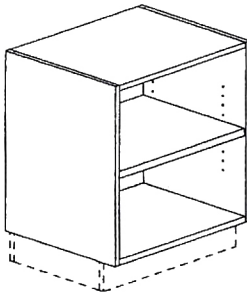


Architectural Casework

certified by the AWI Quality Certification Program.



100100



PRODUCT DESCRIPTION

Example: 12CAB3020

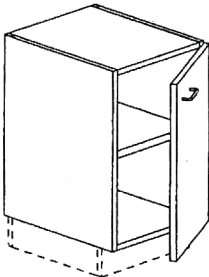
Base Cabinet – Open

- Full sub-top
- Cabinet is assembled
- One adjustable shelf included
- Continuous base may be ordered separately
- Counter tops or work surfaces must be ordered separately
- Height indicated includes 4" base and standard countertop,

Available Dimensions (in inches):

Widths	12	15	16	18	21	24	27	30	32	33	36	39	42	45	48
Heights	30	34	36												
Depths	20	24													

100101



PRODUCT DESCRIPTION

Example: 12SB3624HL

Base Cabinet – Single Door

- Full sub-top
- Cabinet is assembled
- One adjustable shelf included
- Continuous base may be ordered separately
- Counter tops or work surfaces must be ordered separately
- Height indicated includes 4" base and standard countertop,
- Lock may be ordered separately

Available Dimensions (in inches):

Width	12	15	16	18	21	24									
Height	30	34	36												
Depth	20	24													

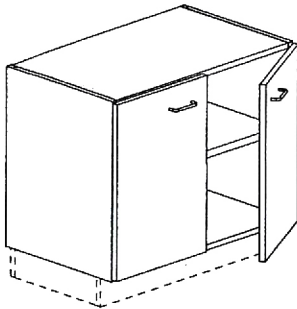


Architectural Casework

certified by the AWI Quality Certification Program.



100102



PRODUCT DESCRIPTION

Example: 24SB3020

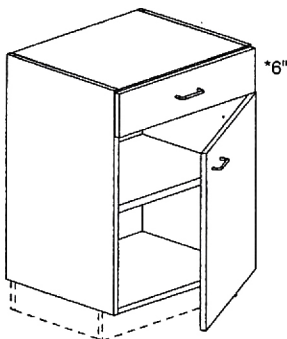
Base Cabinet – Double Door

- Full sub-top
- Cabinet is assembled
- One adjustable shelf included
- Continuous base may be ordered separately
- Counter tops or work surfaces must be ordered separately
- Height indicated includes 4" base and standard countertop,
- Lock may be ordered separately

Available Dimensions (in inches):

Widths					24	27	30	32	33	36	39	42	45	48
Heights		34	36											
Depths	20	24												

100211



PRODUCT DESCRIPTION

Example: 12DSB3620

Drawer Storage Base – Single Door

- Full sub-top
- Cabinet is assembled
- One adjustable shelf included
- Continuous base may be ordered separately
- Counter tops or work surfaces must be ordered separately
- Height indicated includes 4" base and standard countertop,
- Lock may be ordered separately
- *34"H cabinet includes 4" drawer

Available Dimensions (in inches):

Width	12	15	16	18	21	24								
Height		34	36											
Depth	20	24												

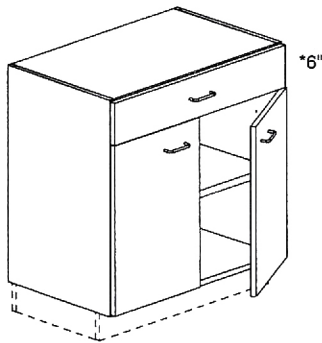


Architectural Casework

certified by the AWI Quality Certification Program.



100212



PRODUCT DESCRIPTION

Example: 24DSB3620

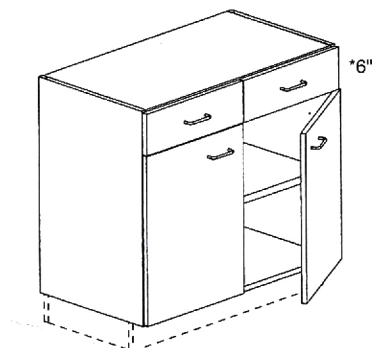
Drawer Storage Base – Double Door

- Full sub-top
- Cabinet is assembled
- One adjustable shelf included
- Continuous base may be ordered separately
- Counter tops or work surfaces must be ordered separately
- Height indicated includes 4" base and standard countertop
- Lock may be ordered separately
- *34"H cabinet includes 4" drawer

Available Dimensions (in inches):

Widths					24	27	30	32	33					
Heights		34	36											
Depths	20	24												

100221



PRODUCT DESCRIPTION

Example: 36DSB3620

Drawer Storage Base – Double Drawer

- Full sub-top
- Cabinet is assembled
- One adjustable shelf included
- Continuous base may be ordered separately
- Counter tops or work surfaces must be ordered separately
- Height indicated includes 4" base and standard countertop,
- Lock may be ordered separately
- *34"H cabinet includes 4" drawer

Available Dimensions (in inches):

Widths										36	39	42	45	48
Heights		34	36											
Depths	20	24												

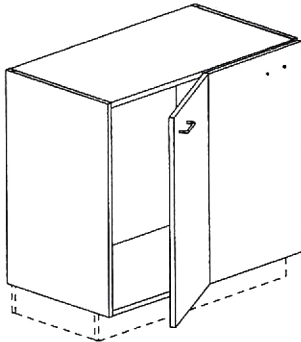


Architectural Casework

certified by the AWI Quality Certification Program.



100176



PRODUCT DESCRIPTION

Example: 36CB3624

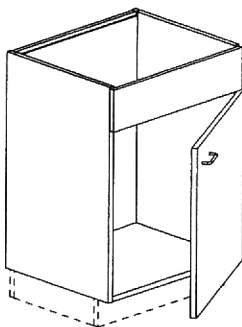
Corner Base Cabinet

- Full sub-top
- Cabinet is assembled
- Center post to hinge doors at center included
- Continuous base may be ordered separately
- Counter tops or work surfaces must be ordered separately
- Height indicated includes 4" base and standard countertop,
- Lock may be ordered separately
- Each door is drilled, only one pull included

Available Dimensions (in inches):

Width									36		
Height		34	36								
Depth	20	24									

100151



PRODUCT DESCRIPTION

Example: 24FSB3620

Sink Base with False Front – Single Door

- Cabinet is assembled
- Continuous base may be ordered separately
- Counter tops or work surfaces must be ordered separately
- Height indicated includes 4" base and standard countertop
- Lock may be ordered separately

Available Dimensions (in inches):

Width						24					
Height			36								
Depth	20	24									

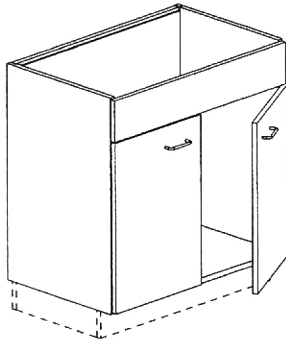


Architectural Casework

certified by the AWI Quality Certification Program.



100152



PRODUCT DESCRIPTION

Example: 24FSB3620

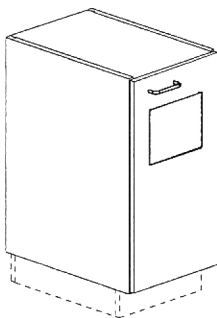
Sink Base with False Front – Double Door

- Cabinet is assembled
- Continuous base may be ordered separately
- Counter tops or work surfaces must be ordered separately
- Height indicated includes 4" base and standard countertop,
- Lock may be ordered separately

Available Dimensions (in inches):

Widths						24	27	30	32	33	36	39	42	45	48
Heights		34	36												
Depths	20	24													

100103



PRODUCT DESCRIPTION

Example: 16TR3620

Trash Door Base Cabinet

- Full sub-top
- Cabinet is assembled
- Continuous base may be ordered separately
- Counter tops or work surfaces must be ordered separately
- Height indicated includes 4" base and standard countertop
- Includes 8"H x 10"W flipper door, hinged at top
- Accommodates trash can up to 16"H

Available Dimensions (in inches):

Width			16												
Height			36												
Depth	20	24													

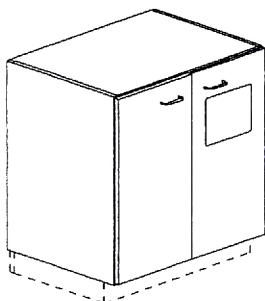


Architectural Casework

certified by the AWI Quality Certification Program.



100104



PRODUCT DESCRIPTION

Example: 32TR3620

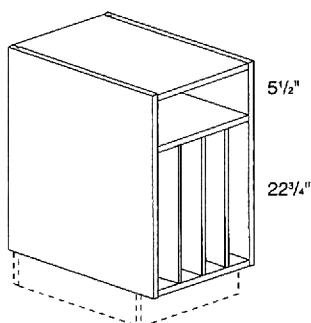
Trash Door Base Cabinet

- Full sub-top
- Cabinet is assembled
- Continuous base may be ordered separately
- Counter tops or work surfaces must be ordered separately
- Height indicated includes 4" base and standard countertop
- Includes 8"H x 10"W flipper door, hinged at top
- Accommodates trash can up to 16"H

Available Dimensions (in inches):

Width						32			
Height			36						
Depth	20	24							

100178



PRODUCT DESCRIPTION

16XR3624

X-Ray Base Cabinet

- Full sub-top
- Cabinet is assembled
- Continuous base may be ordered separately
- Counter tops or work surfaces must be ordered separately
- Height indicated includes 4" base and standard countertop,
- Horizontal opening is 5 1/2"H
- Four fixed vertical slots are 3 1/4"W x 22 3/4"H

Available Dimensions (in inches):

Width			16	21	27	32	36		
Height			36						
Depth		24							

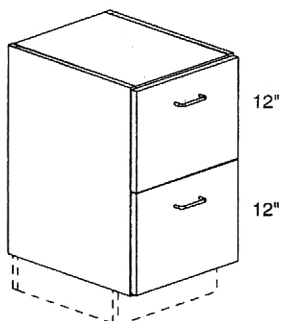


Architectural Casework

certified by the AWI Quality Certification Program.



100223



PRODUCT DESCRIPTION

Example: 16FB3020

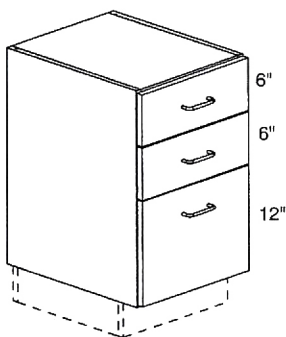
File Base Cabinet, 12-12

- Full sub-top
- Cabinet is assembled
- Includes two file drawers
- Continuous base may be ordered separately
- Counter tops or work surfaces must be ordered separately
- Height indicated includes 4" base and standard countertop,
- Lock(s) may be ordered separately

Available Dimensions (in inches):

Width			16	18	21						
Height	30										
Depth	20	24									

100230



PRODUCT DESCRIPTION

Example: 16DFB3020

Drawer File Base Cabinet, 6-6-12

- Full sub-top
- Cabinet is assembled
- Includes one file drawer
- Continuous base may be ordered separately
- Counter tops or work surfaces must be ordered separately
- Height indicated includes 4" base and standard countertop
- Lock(s) may be ordered separately

Available Dimensions (in inches):

Width			16	18	21						
Height	30										
Depth	20	24									

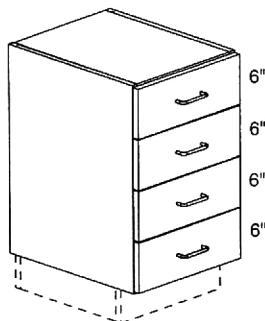


Architectural Casework

certified by the AWI Quality Certification Program.



100245



PRODUCT DESCRIPTION

Example: 16DB3020

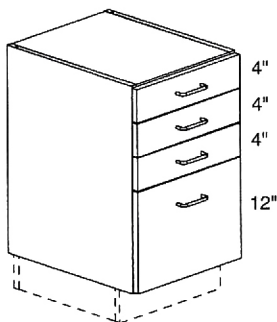
Drawer Base Cabinet, 6-6-6-6

- Full sub-top
- Cabinet is assembled
- Continuous base may be ordered separately
- Counter tops or work surfaces must be ordered separately
- Height indicated includes 4" base and standard countertop,
- Lock(s) may be ordered separately

Available Dimensions (in inches):

Width			16	18	21								
Height	30												
Depth	20	24											

100240



PRODUCT DESCRIPTION

Example: 16UF3020

Utility File Base Cabinet, 4-4-4-12

- Full sub-top
- Cabinet is assembled
- Includes one file drawer
- Continuous base may be ordered separately
- Counter tops or work surfaces must be ordered separately
- Height indicated includes 4" base and standard countertop,
- Lock may be ordered separately

Available Dimensions (in inches):

Width			16										
Height	30												
Depth	20	24											

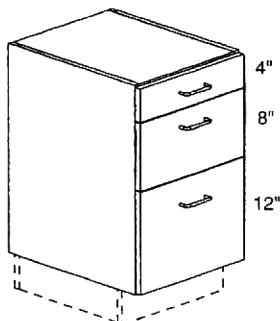


Architectural Casework

certified by the AWI Quality Certification Program.



100235



PRODUCT DESCRIPTION

Example: 16UDF3020

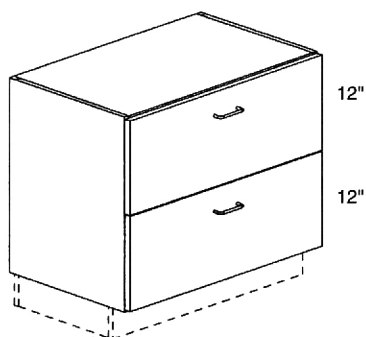
Utility Drawer File Base Cabinet, 4-8-12

- Full sub-top
- Cabinet is assembled
- Includes one file drawer
- Continuous base may be ordered separately
- Counter tops or work surfaces must be ordered separately
- Height indicated includes 4" base and standard countertop,
- Lock may be ordered separately

Available Dimensions (in inches):

Width			16																
Height	30																		
Depth	20	24																	

100225



PRODUCT DESCRIPTION

Example: 32LFB3020

Lateral File Base Cabinet, 12-12

- Full sub-top
- Cabinet is assembled
- Includes two file drawers
- Continuous base may be ordered separately
- Counter tops or work surfaces must be ordered separately
- Height indicated includes 4" base and standard countertop
- Lock(s) may be ordered separately

Available Dimensions (in inches):

Width										32									
Height	30																		
Depth	20	24																	

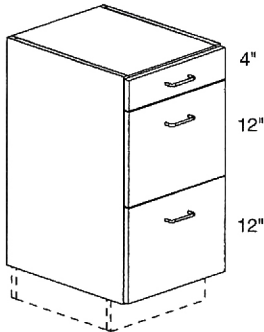


Architectural Casework

certified by the AWI Quality Certification Program.



100231



ADA

PRODUCT DESCRIPTION

Example: 16UFB3420

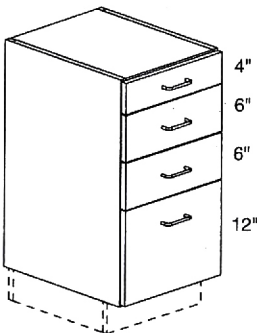
Utility File Base Cabinet, 4-12-12

- Full sub-top
- Cabinet is assembled
- Includes two file drawers
- Continuous base may be ordered separately
- Counter tops or work surfaces must be ordered separately
- Height indicated includes 4" base and standard countertop
- Lock(s) may be ordered separately

Available Dimensions (in inches):

Width			16	18	21									
Height		34												
Depth	20	24												

100241



ADA

PRODUCT DESCRIPTION

Example: 16UDF3420

Utility Drawer File Base Cabinet, 4-6-6-12

- Full sub-top
- Cabinet is assembled
- Includes one file drawer
- Continuous base may be ordered separately
- Counter tops or work surfaces must be ordered separately
- Height indicated includes 4" base and standard countertop
- Lock(s) may be ordered separately

Available Dimensions (in inches):

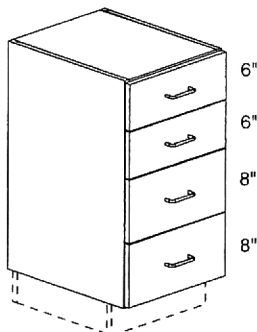
Width			16	18	21									
Height		34												
Depth	20	24												



Architectural Casework

certified by the AWI Quality Certification Program.

100246



ADA

PRODUCT DESCRIPTION

Example: 16DB3420

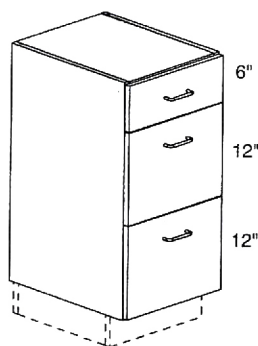
Drawer Base Cabinet, 6-6-8-8

- Full sub-top
- Cabinet is assembled
- Continuous base may be ordered separately
- Counter tops or work surfaces must be ordered separately
- Height indicated includes 4" base and standard countertop
- Lock(s) may be ordered separately

Available Dimensions (in inches):

Width		15	16	18	21								
Height		34											
Depth	20	24											

100232



PRODUCT DESCRIPTION

Example: 16DFB3620

Drawer File Base Cabinet, 6-12-12

- Full sub-top
- Cabinet is assembled
- Includes two file drawers
- Continuous base may be ordered separately
- Counter tops or work surfaces must be ordered separately
- Height indicated includes 4" base and standard countertop
- Lock(s) may be ordered separately

Available Dimensions (in inches):

Width			16	18	21	24							
Height			36										
Depth	20	24											

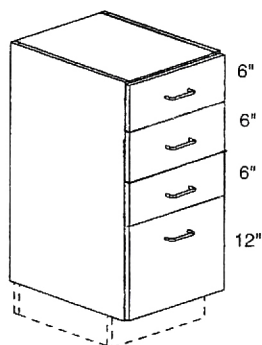


Architectural Casework

certified by the AWI Quality Certification Program.



100233



PRODUCT DESCRIPTION

Example: 16DDF3620

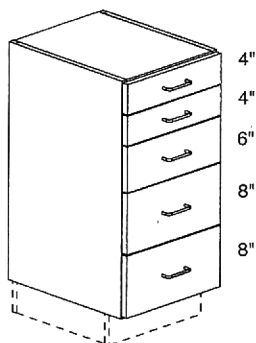
Drawer File Base Cabinet, 6-6-6-12

- Full sub-top
- Cabinet is assembled
- Includes one file drawer
- Continuous base may be ordered separately
- Counter tops or work surfaces must be ordered separately
- Height indicated includes 4" base and standard countertop
- Lock(s) may be ordered separately

Available Dimensions (in inches):

Width			16	18	21	24						
Height			36									
Depth	20	24										

100242



PRODUCT DESCRIPTION

Example: 16UDB3620

Utility Drawer Base Cabinet, 4-4-6-8-8

- Full sub-top
- Cabinet is assembled
- Continuous base may be ordered separately
- Counter tops or work surfaces must be ordered separately
- Height indicated includes 4" base and standard countertop
- Lock(s) may be ordered separately

Available Dimensions (in inches):

Width		15	16	18								
Height			36									
Depth	20	24										

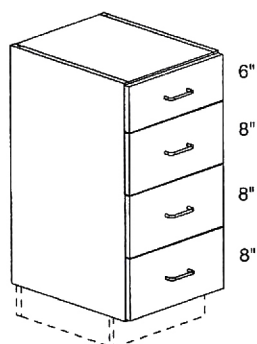


Architectural Casework

certified by the AWI Quality Certification Program.

techline.
CABINETRY

100247



PRODUCT DESCRIPTION

Example: 16DB3620

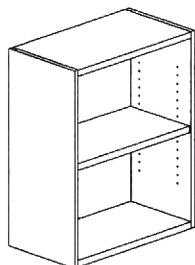
Drawer Base Cabinet, 6-8-8-8

- Full sub-top
- Cabinet is assembled
- Continuous base may be ordered separately
- Counter tops or work surfaces must be ordered separately
- Height indicated includes 4" base and standard countertop
- Lock(s) may be ordered separately

Available Dimensions (in inches):

Width		15	16	18	21	24	30	32						
Height			36											
Depth	20	24												

100300



PRODUCT DESCRIPTION

Example: 12W24WF

Wall Cabinet – Open

- One adjustable shelf included
- 36"H and 40"H wall cabinets include two adjustable shelves

Available Dimensions (in inches):

Widths	12	15	16	18	21	24	27	30	32	33	36	39	42	45	48
Heights	30	34	36												
Depths															

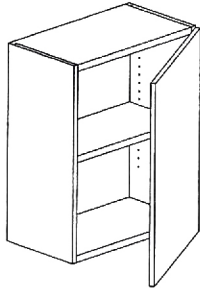


Architectural Casework

certified by the AWI Quality Certification Program.



100301



PRODUCT DESCRIPTION

Example: 12W30

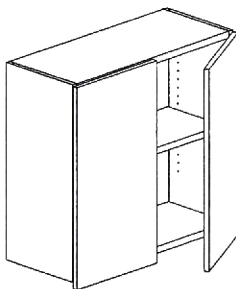
Wall Cabinet – Single Door

- One adjustable shelf included
- 36"H and 40"H wall cabinets include two adjustable shelves
- Door extends 1" below cabinet
- No pull necessary

Available Dimensions (in inches):

Width	12	15	16	18	21	24							
Height	18	24	30	36	40								
Depth	14												

100302



PRODUCT DESCRIPTION

Example: 24W18

Wall Cabinet – Double Door

- One adjustable shelf included
- 36"H and 40"H wall cabinets include two adjustable shelves
- Doors extend 1" below cabinet
- No pull necessary

Available Dimensions (in inches):

Width						24	27	30	32	33	36	39	42	45	48
Height	18	24	30	36	40										
Depth	14														

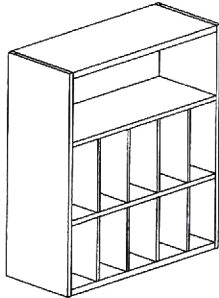


Architectural Casework

certified by the AWI Quality Certification Program.



100335



PRODUCT DESCRIPTION

32LSF36

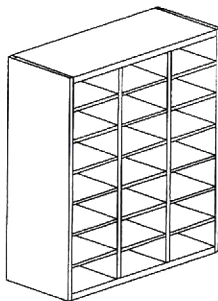
Lateral Organizer Cabinet – 36" High

- Ten openings, each is 5⁷/₈"W x 12¹/₈"H x 12"D
- Top opening is 8³/₈"H
- 1/2" removable dividers

Available Dimensions (in inches):

Width							32			
Height			36							
Depth	14									

100341



PRODUCT DESCRIPTION

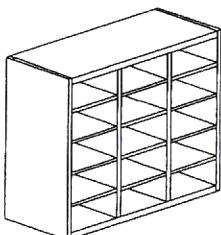
32MS36

Mail Storage Cabinet – 36" High

- Fourteen openings, each is 9⁵/₈"W x varying H x 12"D
- 1/2" removable dividers

Available Dimensions (in inches):

Width							32			
Height			30	36	40					
Depth	14									



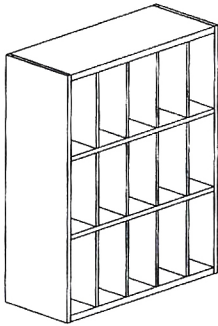


Architectural Casework

certified by the AWI Quality Certification Program.



100336



PRODUCT DESCRIPTION

32LSF40

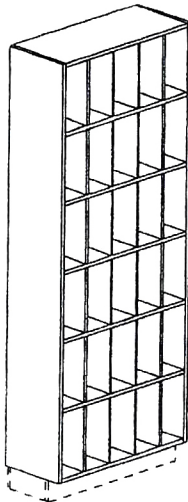
Lateral Organizer Cabinet – 40" High

- Fifteen openings, each is 5⁷/₈"W x 12¹/₈"H x 12"D
- 1/2" removable dividers

Available Dimensions (in inches):

Width							32			
Height					40					
Depth	14									

100430



PRODUCT DESCRIPTION

32LSF80

Lateral Organizer Cabinet – 80" High

- Thirty openings, each is 5⁷/₈"W x 12¹/₈"H x 12"D
- 1/2" removable dividers
- Continuous base may be ordered separately

Available Dimensions (in inches):

Width	32								
Height	80								
Depth	14								

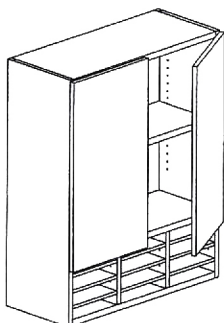


Architectural Casework

certified by the AWI Quality Certification Program.



100355



PRODUCT DESCRIPTION

Example: 32FH36-SU

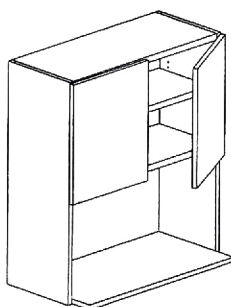
Form Holder Cabinet – Double Door

- One adjustable shelf included
- 12 openings, each is 9⁵/₈"W x varying H x 12"D
- Door extends 1" below fixed shelf
- No pull necessary

Available Dimensions (in inches):

Width							32			
Height				36	40					
Depth	14									

100360



PRODUCT DESCRIPTION

Example: 32MW36

Microwave Cabinet - Double Door

- One adjustable shelf included.
- Opening for microwave is 22½", 30½"W x 15½"H x 15½"D
- Door extends 1" below fixed shelf
- No pull necessary

Available Dimensions (in inches):

Width			24				32			
Height			30	36	40					
Depth	14									

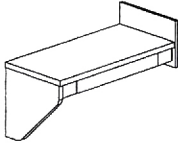


Architectural Casework

certified by the AWI Quality Certification Program.



100290



PRODUCT DESCRIPTION

32RXLH

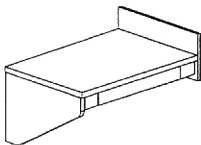
Prescription Desk – Corner Mounted

- Includes 24"W drawer

Available Dimensions (in inches):

Width	34																		
Height	17																		
Depth	16																		

100291



PRODUCT DESCRIPTION

32RXRH

Prescription Desk – Corner Mounted

- Includes 24"W drawer

Available Dimensions (in inches):

Width	34																		
Height	23																		
Depth	23																		

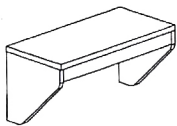


Architectural Casework

certified by the AWI Quality Certification Program.



100292



PRODUCT DESCRIPTION

32RXA

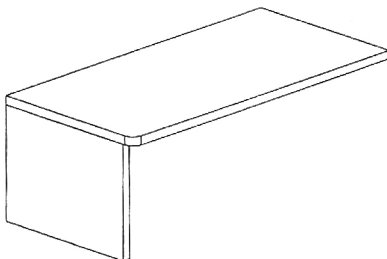
Prescription Desk – Wall Mounted

- Includes 30"W drawer

Available Dimensions (in inches):

Width	34													
Height	17													
Depth	17													

100900



PRODUCT DESCRIPTION

48DB2418

Dressing Bench

- Bench is reversible
- Wall bracket included

Available Dimensions (in inches):

Width	48													
Height	18													
Depth	24													

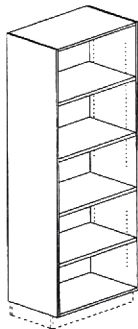


Architectural Casework

certified by the AWI Quality Certification Program.



100400



PRODUCT DESCRIPTION

Example: 32BK8024

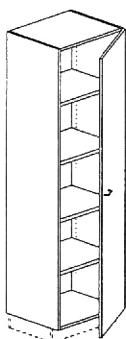
Tall Storage Cabinet – Open

- One fixed shelf included
- 61"H storage cabinet includes 3 adjustable shelves
- 80"H storage cabinet includes 4 adjustable shelves
- Continuous base may be ordered separately

Available Dimensions (in inches):

Width	12	16	18	24	30	32	36		
Height	61		80						
Depth	14		20	24					

100401



PRODUCT DESCRIPTION

Example: 24SC8024

Tall Storage Cabinet – Single Door

- One fixed shelf included
- 61"H storage cabinet includes 3 adjustable shelves
- 80"H storage cabinet includes 4 adjustable shelves
- Continuous base may be ordered separately
- Lock may be ordered separately

Available Dimensions (in inches):

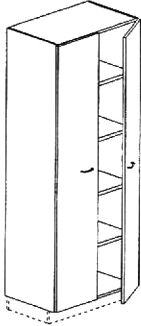
Width	12	16	18	24					
Height	61		80						
Depth	14		20	24					



Architectural Casework

certified by the AWI Quality Certification Program.

100402



PRODUCT DESCRIPTION

Example: 36SC8024

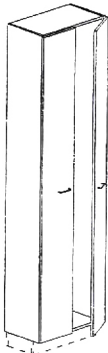
Tall Storage Cabinet – Double Door

- One fixed shelf included
- 61"H storage cabinet includes 3 adjustable shelves
- 80"H storage cabinet includes 4 adjustable shelves
- Continuous base may be ordered separately
- Lock may be ordered separately

Available Dimensions (in inches):

Width				24	30	32	36	42	48
Height	61		80						
Depth	14		20	24					

100410



PRODUCT DESCRIPTION

24ECS9014

Scope Cabinet

- Includes scope mounting bracket and shelf

Available Dimensions (in inches):

Width	24								
Height	89								
Depth	14								

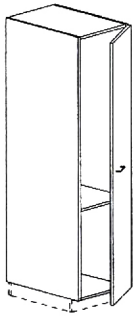


Architectural Casework

certified by the AWI Quality Certification Program.



100411



PRODUCT DESCRIPTION

16WC6124

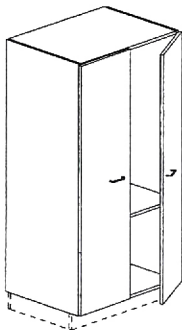
Tall Wardrobe Cabinet – Single Door

- One fixed shelf included
- One pole included, fits most hanger sizes
- Continuous base may be ordered separately
- Lock may be ordered separately

Available Dimensions (in inches):

Width	16							
Height	61							
Depth	24							

100412



PRODUCT DESCRIPTION

32WC6124

Tall Wardrobe Cabinet – Double Door

- One fixed shelf included
- One pole included, fits most hanger sizes
- Continuous base may be ordered separately (refer to components section)
- Lock may be ordered separately

Available Dimensions (in inches):

Width	32							
Height	61							
Depth	24							

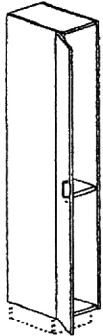


Architectural Casework

certified by the AWI Quality Certification Program.

100500

100501-VP



PRODUCT DESCRIPTION

EXAMPLE: 12SL7118

Locker - Single Door

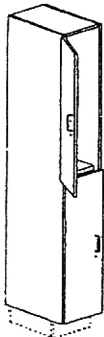
- One shelf and two interior coat hooks included
- Vented for air circulation
- Hinge - 120° concealed, Hinge destination req'd • Steel Pull - 96mm
- Lock & 2 keys included, keyed random (KR) • Master key (184-20-116) available
- Optional - Vision Panel Door

Available Dimensions (In Inches):

Width	12	12				
Height	71	80				
Depth	18	20				

100505

100502-VP



PRODUCTION DESCRIPTION

EXAMPLE: 12DL7118

Locker - Double Door

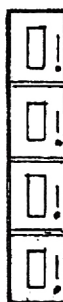
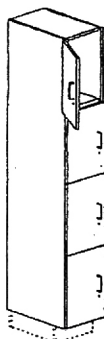
- Two interior coat hooks per compartment included
- Vented for air circulation
- Hinge - 120° concealed, Hinge destination req'd • Steel Pull - 96mm
- Lock & 2 keys included, keyed random (KR) • Master key (184-20-116) available
- Optional - Vision Panel Door

Available Dimensions (In Inches):

Width	12	12				
Height	71	80				
Depth	18	20				

100506

100504-VP



PRODUCTION DESCRIPTION

EXAMPLE: 12QL7118

Locker - Quadruple Door

- Vented for air circulation
- Hinge - 120° concealed, Hinge destination req'd • Steel Pull - 96mm
- Lock & 2 keys included, keyed random (KR) • Master key (184-20-116) available
- Optional - Vision Panel Door

Available Dimensions (In Inches):

Width	12	12				
Height	71	80				
Depth	18	20				



Architectural Casework

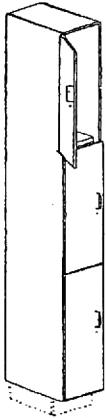
certified by the AWI Quality Certification Program.

100507

100507-VP

PRODUCT DESCRIPTION

EXAMPLE: 16TR8020



Locker - Three Door

- Two interior coat hooks per compartment included
- Vented for air circulation
- Hinge - 120° concealed, Hinge destination req'd • Steel Pull - 96mm
- Lock & 2 keys included and keyed random (KR) • Master key (184-20-116) available
- Optional - Vision Panel Door (VP)

Available Dimensions (In Inches):

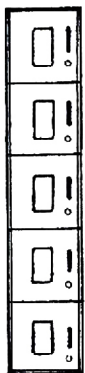
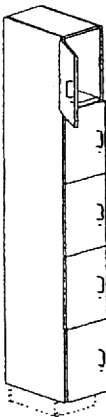
Width	12	16				
Height	80	80				
Depth	20	20				

PRODUCTION DESCRIPTION

EXAMPLE: 16FD8020

100509

100509-VP



Locker - Five Door

- Vented for air circulation
- Hinge - 120° concealed, Hinge destination req'd • Steel Pull - 96mm
- Lock & 2 keys included, keyed random (KR) • Master Key (184-20-116) available
- Optional - Vision Panel Door (VP)

Available Dimensions (In Inches):

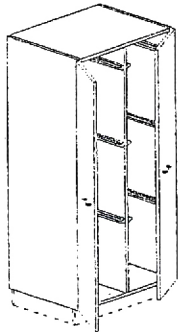
Width	12	16				
Height	80	80				
Depth	20	20				



Architectural Casework

certified by the AWI Quality Certification Program.

100420



PRODUCT DESCRIPTION

30LCS6124

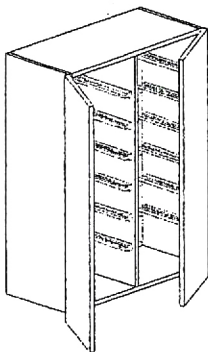
Cone Storage Cabinet

- 18³/₈"H applicator spacing
- Compatible with Varian and Siemens oncology systems

Available Dimensions (In Inches):

Width	30								
Height	61								
Depth	24								

100370



PRODUCT DESCRIPTION

30LMS4014

Mold Storage Cabinet

- 5 ¹/₁₆"H tray spacing
- Trays not included
- Compatible with Siemens and Varian trays

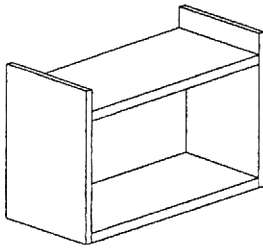
Available Dimensions (In Inches):

Width	30								
Height	40								
Depth	14								

100372

PRODUCT DESCRIPTION

24WS16



Wall Shelf

- Inside opening 22½"W x 11⅜"H

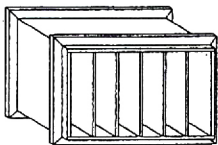
Available Dimensions (in inches):

Width	24								
Height	16								
Depth	11								

100373

PRODUCT DESCRIPTION

19RP12



Records Pass-Through

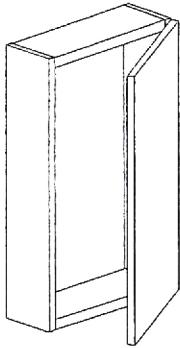
- Openings are 2¼"W x 10½"H
- Dividers are ½" thick
- Trim included (shown)

Available Dimensions (In inches):

Width	18								
Height	12								
Depth	12								



16LC2705



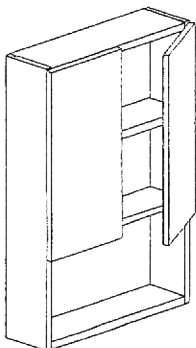
Laser Cabinet

- No back panel included
- Field drill hole in door
- Trim included (not shown)

Available Dimensions (in inches):

Width	16								
Height	27								
Depth	5								

24TWC3607



Toilet Wall Cabinet

- Doors are 24"H
- Opening is 23"W x 11⁷/₈"H

Available Dimensions (in inches):

Width	24							
Height	36							
Depth	7							

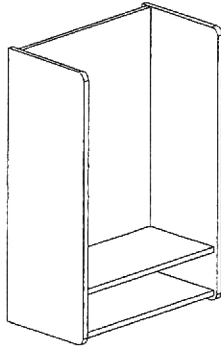


Architectural Casework

certified by the AWI Quality Certification Program.



100371



PRODUCT DESCRIPTION

24TC3614

Telephone Cabinet

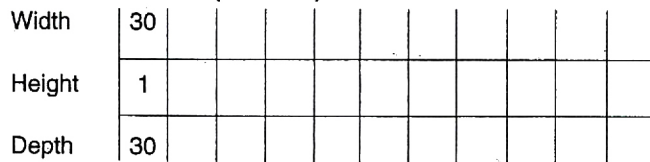
- Bottom opening is 5"H

Available Dimensions (in inches):

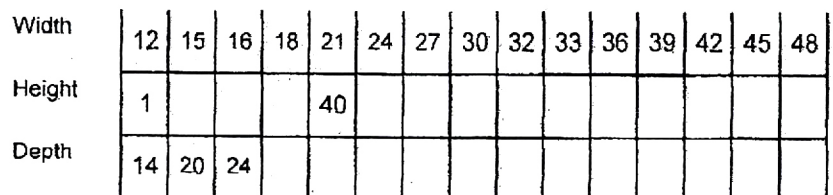
Width	24													
Height	36													
Depth	14													



30CWS30



Example: 12SH14



Example: SH12120

