



Features and Benefits



Modular Furniture



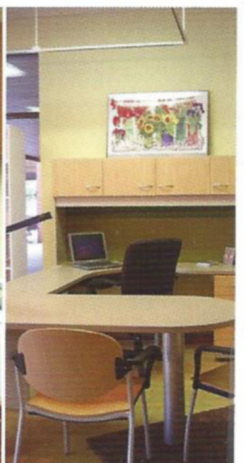


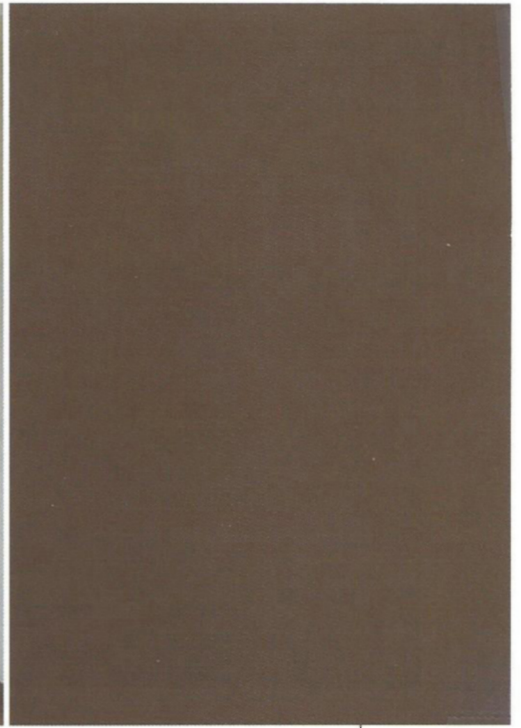
Quality and Style in a Fraction of the Time!

Our Modular Casework and Furniture lines comprise a pre-engineered, pre-selected cabinet offering which is available in a fraction of the time as built-in casework. Where some manufacturers take up to two to three months to fill an order, we can have the same order to you in as little as three weeks! Our mission is to streamline the process for architects and designers so finishing an office space takes much less time.

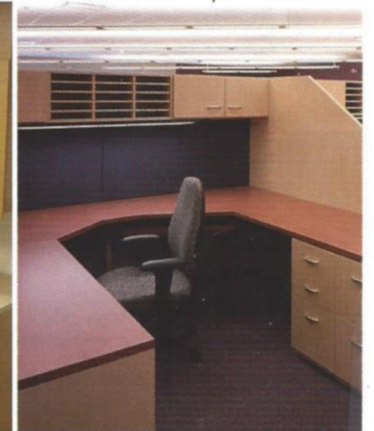
FEATURES AND BENEFITS

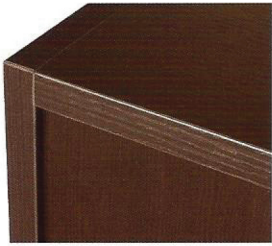
- Our Modular Casework and Furniture can be depreciated in 7 years vs. the 39 year depreciation of built-in cabinets
- A wide selection of colors, wood textures and countertop options
- Limited lifetime warranty
- Can be moved at any time
- Shipped fully assembled (unless otherwise noted)
- True and accurate alignment of cabinets is assured
- Finished on the inside and outside
- Meets the testing requirements of BIFMA/ANSI laminate
- 2D and 3D drawings plus a quotation at no charge
- Urea Formaldehyde free
- Can contribute to LEED points for materials and resources





	CUSTOM MILLWORK	STANDARD CASEWORK	TECHLINE® MODULAR CASEWORK AND FURNITURE
Depreciation	39 Years	39 Years	7 Years
Consistent Pricing	No	Sometimes	Yes
Consistent Design/Materials AutoCAD Blocks Available	No	Sometimes	Yes
Consistent Quality	No	Sometimes	Yes
AWI Member	Sometimes	Sometimes	Yes
Use Recycled Materials	No	Sometimes	Yes
GREENGUARD Certified	No	Sometimes	Yes
CARB Compliant	No	Sometimes	Yes
FSC® Certified	No	Sometimes	Yes
LEED Credits	No	Sometimes	Yes
Short Lead Time	No	Sometimes	Yes
Online Catalog for Replacement/Additions	No	No	Yes
Relocatable	No	45%	95%





Full 3/4"-thick Backs and Finished Sub-Top

- Dowel pin structural joints
- Edgebanding on all back edges
- Full 3/4"-thick finished sub-top provides horizontal and vertical stability



Full 4-Sided Drawer Design

- 3/4"-thick side members
- Dowel pin structural joints
- Removable front
- 4-sided captured-in-groove laminated drawer bottom



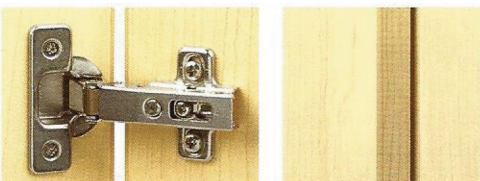
Full Extension Ball Bearing Slide

- Tested to 120# per ANSI/BIFMA X5.5 Section 7
- Silky smooth ball bearing action
- Hold/close function
- Lever disconnect for easy drawer removal
- Zinc plate finish



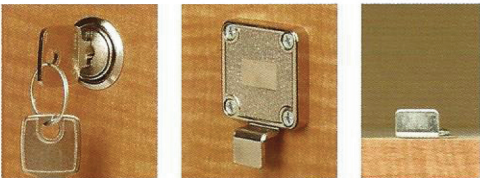
Patented Twin Pin Low Profile Shelf Supports

- Premium strength, 200# tested shelf support
- Clear polycarbonate
- Anti-tip and shelf hold features
- Adjustments on 1-1/4" (32mm) centers



120° Concealed Hinge

- Self closing
- 120° pivot swing
- Nickel finish
- Minimal invasion of interior space
- Quick disconnect feature



6-Tumbler Dead Bolt Locking System

- 6-tumbler system for greater security
- Double-bit keys, allowing insertion up or down
- Key number stamped on lock face and keys
- Diecast lock body with positive dead bolt sliding tang
- Secure engagement of dead bolt tangs into grooves or stop tabs

Additional Lock Styles for Lockers



Cam Lock Hasp Digital Code Lock



128mm Pulls, Mushroom Knob

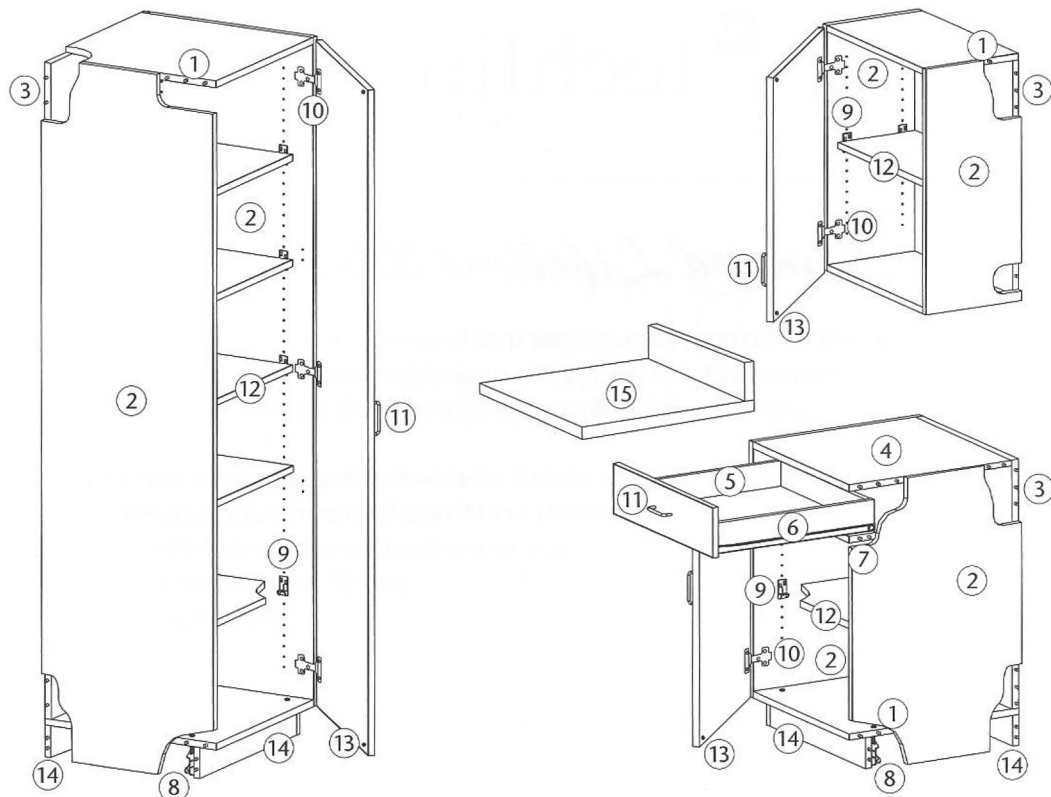
- 128mm (5") length pulls for easy grip and ADA compliance
- Horizontal pull orientation on all fronts, with the exception of Lockers, which have vertical orientation

Metrics

Much of manufacturing is in metrics; a more precise minimums of measurement. Digital reading of sizes in metrics vs. splitting hairs on variances and tolerances in standard sizing enhances exacting fits.

Example: In wood (a less dense material than solid i.e., steel, plastics, etc.), tightly controlled sizing requires maximum accuracy in measuring.

Control over finely tuning measurements assures timeless reconfiguration.



- ① Rigid structural dowel pin construction.
- ② Durable, two-sided, 3/4"-thick thermally fused laminate (TFL). High strength core materials and balanced laminate applications. No more white interiors.
- ③ Full 3/4"-thick backs (no rail) as an integral component.
- ④ 3/4"-thick, finished sub-top for horizontal and vertical stability.
- ⑤ Maple finish four-sided drawer design with 3/4"-thick side members and dowel pin structural joints. Four-sided captured-in-groove laminated drawer bottom. Removable finished front.
- ⑥ 120# full extension ball bearing drawer slide, tested under ANSI/BIFMA X5.5 Section 7.
- ⑦ Frame rails between drawers and lower compartments increase cabinet rigidity.
- ⑧ Four corner levelers, accessible from within the cabinet.
- ⑨ Premium strength, twin pin 200# shelf support. Clear polycarbonate supports with anti-tip and shelf hold features. Adjustments on 1-1/4" (32mm) centers.
- ⑩ 120° concealed style self-closing hinges.
- ⑪ Large grip 128mm pulls or single knobs. See options in General Accessories section. No pulls or knobs on valance front cabinets. Horizontal pull orientation on all fronts, with the exception of Lockers, which have vertical orientation.
- ⑫ Shelves with impact resistant edge extrusion. Shipped in place – no need to find material.
- ⑬ Cushion bumpers on door and drawer fronts.
- ⑭ Dual integral kicks for cabinet rigidity. Upper cabinet loading transfers direct-to-floor, reducing bottom joint stresses.
- ⑮ Countertop work surfaces available in laminate and solid surface.



Proudly Made in
Teutopolis, Illinois

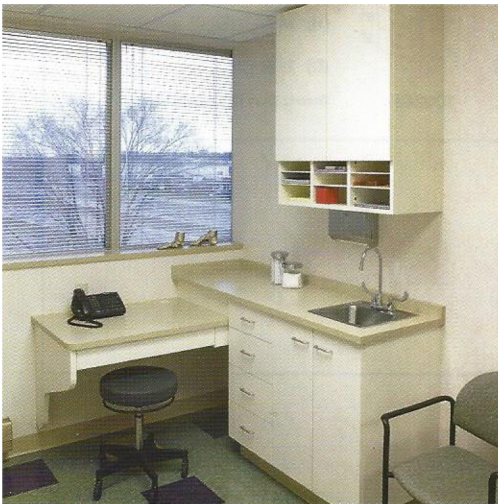


Limited Lifetime Warranty

Techline® warrants to the original purchaser that its product is free from defects in material and workmanship for as long as the original purchaser owns the Techline® product, providing product was installed properly and under normal use.

This warranty is expressly in lieu of any and all other warranties, expressed or implied, including the warranties of merchantability and fitness for a particular purpose. Techline® makes no other representations or warranties of any kind, and shall not be liable for any incidental, consequential or other damages for any alleged negligence, breach of warranty, or upon any other theory, other than the limited warranty first set forth above.

It is expressly understood and agreed that the limit of Techline's® liability shall be, at Techline's® sole option, the repair or re-supply of a like quantity of non-defective product, and that Techline® shall have no such liability except where the damage results solely from a breach of Techline's® warranty. Any claim under this warranty shall be deemed waived unless made in writing and received by Techline® within thirty (30) days of the date the defect to which each claim is discovered or would have been discovered. The term "original purchaser" as used herein, shall be deemed to mean that party for whom the product is originally installed.



The mark of
responsible forestry

Ask about our
FSC availability.

