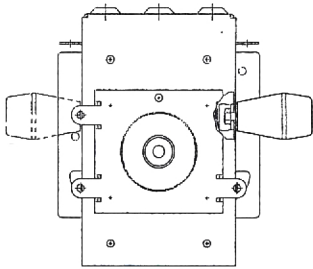
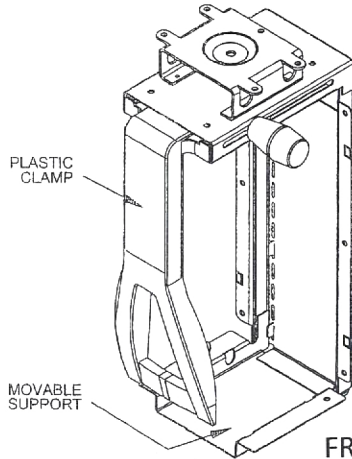


7301 SERIES CPU HOLDERS

MOUNTING INSTRUCTIONS

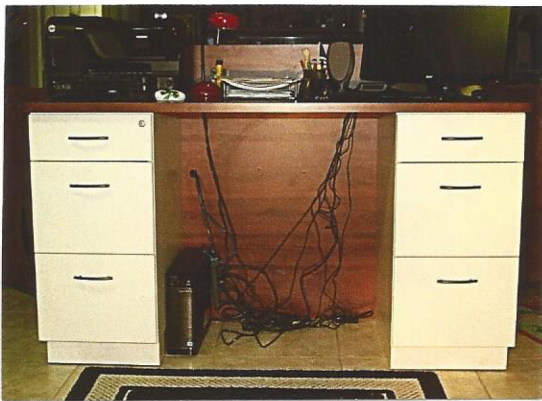


TOP VIEW



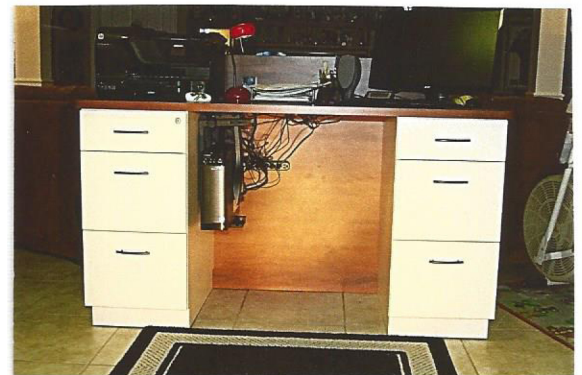
FRONT VIEW

1. Locate and tape the chosen mounting option template to the underside of the desk in the desired location.
2. Drill 1/16" diameter pilot holes at locations shown. Six holes are required for side mounting, and four holes are required for top mounting.
3. Add the movable CPU Holder support bracket so your CPU will clear the top of the mounted bracket.
4. Add the clamp in the outmost position.
5. Place your CPU so the center of gravity is in the middle of the moveable support bracket.
6. With one hand support the CPU. Using the other hand push the plastic clamp tightly against the CPU. Hold in that position and tighten knob.
7. Hang each wire/cable individually. Each individual wire/cable can be undone without the removal of any other item.
8. Mount surge protector for case of Access. Fasten only one side of each plastic wire loop.

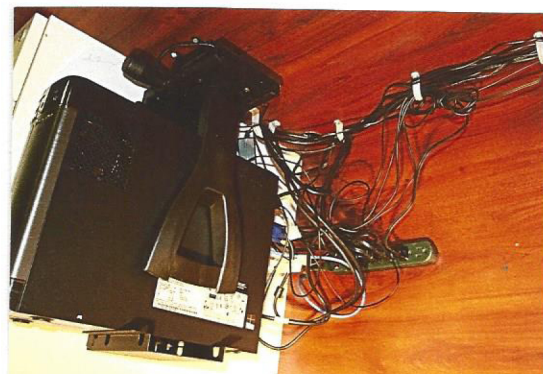


EXISTING

WIRE HARNESS Before/After



CLEAR KNEE SPACE



SUSPENDED & CONCEALED



CPU HOLDER