

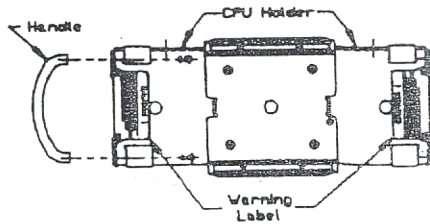
CPU Holder with Swivel and Extension

- Unique strap design adjusts to fit most CPUs
- 360° swivel provides easy access to connections in rear of CPU
- Mounts directly underneath worksurface
- Fully retractable with 17 3/4\" track
- Load rating: 22 kg (50 lbs.)

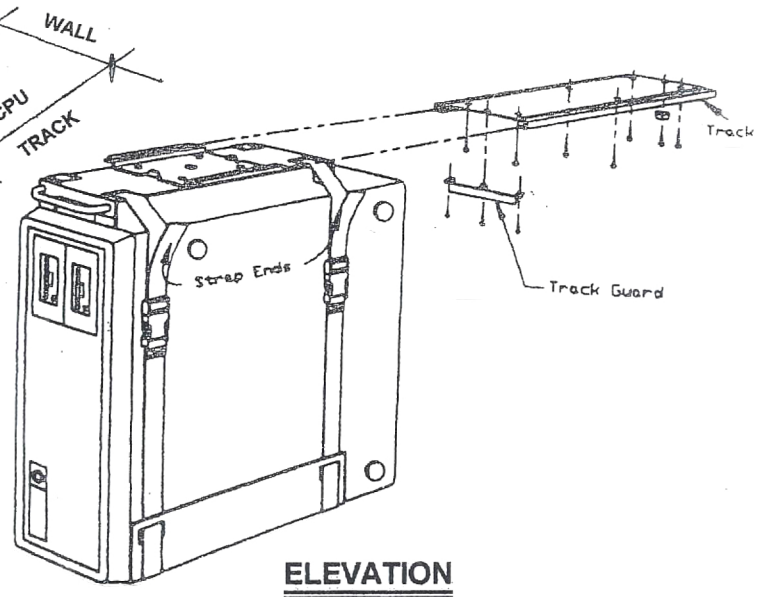
Material: Steel; Straps: Polypropylene

Color	Item No.
black epoxy	639.70.310

Supplied With
Mounting instructions
Hardware



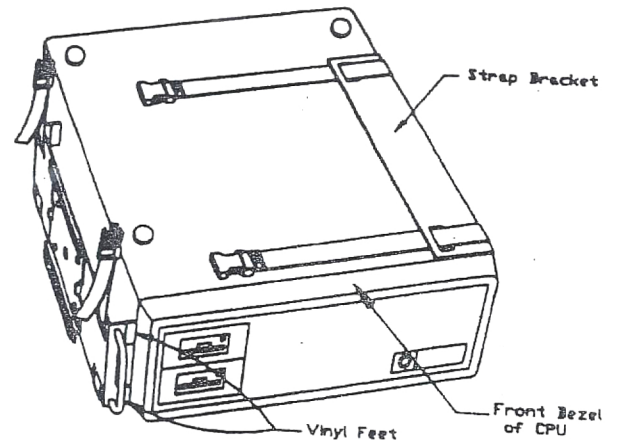
TOP VIEW



ELEVATION

ASSEMBLY INSTRUCTIONS

- 1 - Adjusts to any size CPU.
- 2 - Mount track to underside of worksurface.
- 3 - Depending upon the size of your CPU, position track under the worksurface to obtain a desirable retracted position.
- 4 - Mount handle to CPU Holder.
- 5 - Mount straps to CPU Holder.
- 6 - Mount CPU Holder to CPU
 - a) Lay the CPU Holder and the straps straight out on a flat surface.
 - b) Position the side of your CPU against the vinyl feet of the CPU Holder and on top of the straps, as shown in illustration 'B'. Vinyl feet should lay against the back of the front bezel.
 - c) Wrap the straps around your CPU and snap the buckles together.
 - d) Pull the strap ends and tighten the CPU Holder against your CPU.
- 7 - Slide unit into grooves on track until it hits back bumper stop.



SIDE VIEW