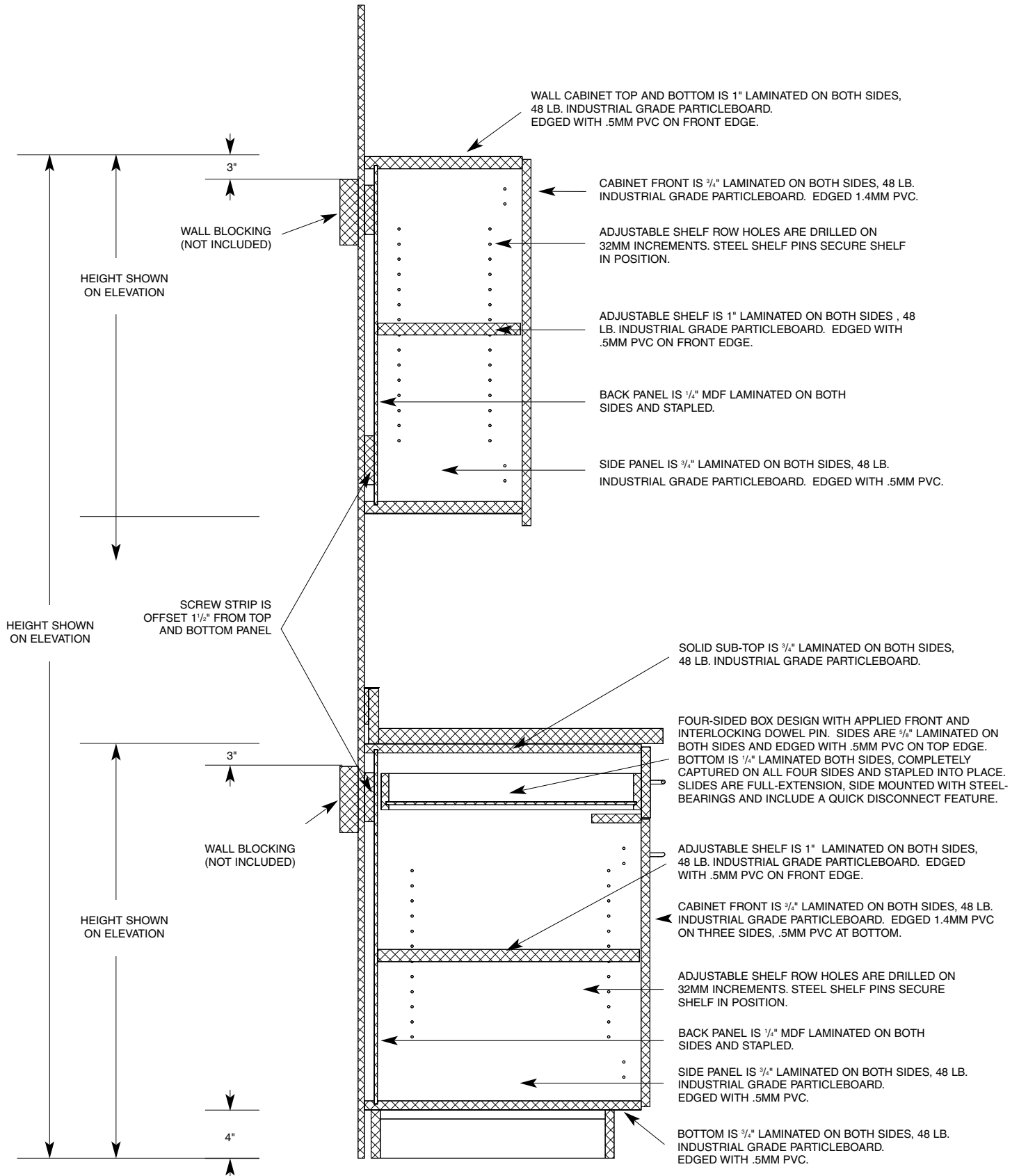
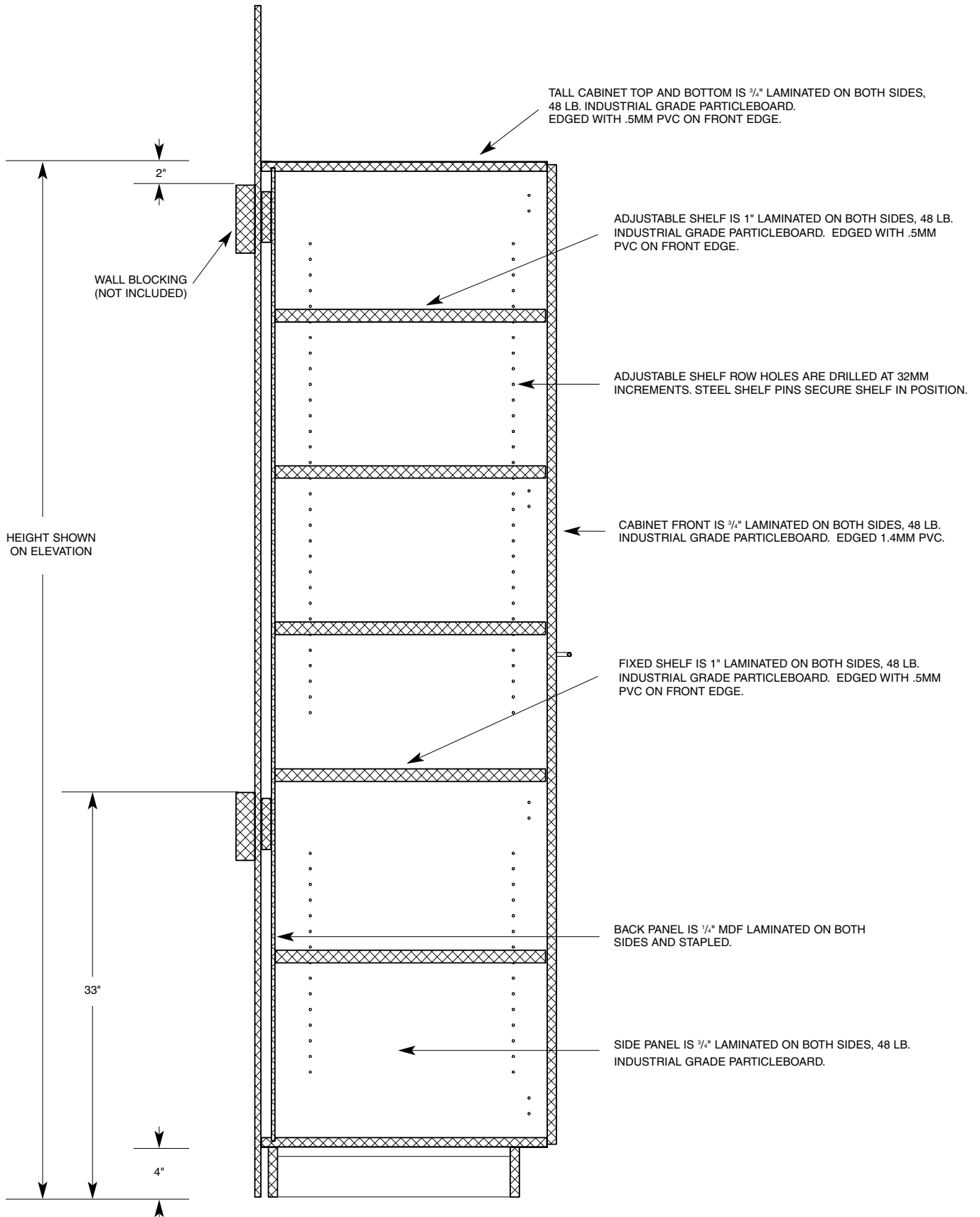


## WALL/BASE CABINET – DESIGN GUIDE

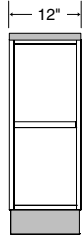


## STORAGE CABINET – DESIGN GUIDE

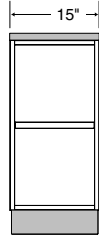


## BASE CABINET DIMENSIONS

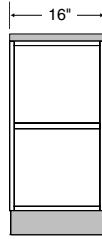
### BASE CABINET WIDTHS – Front View



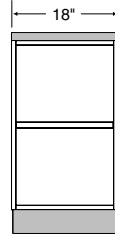
**12"W – NOMINAL**  
WIDTH DIMENSIONS ARE EXACT



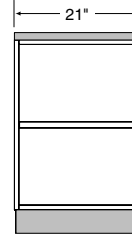
**15"W – NOMINAL**  
WIDTH DIMENSIONS ARE EXACT



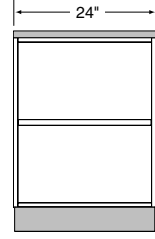
**16"W – NOMINAL**  
WIDTH DIMENSIONS ARE EXACT



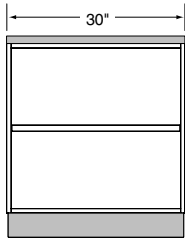
**18"W – NOMINAL**  
WIDTH DIMENSIONS ARE EXACT



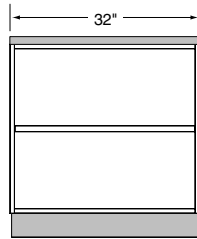
**21"W – NOMINAL**  
WIDTH DIMENSIONS ARE EXACT



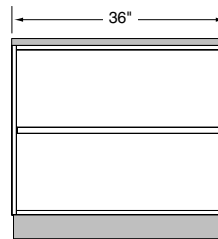
**24"W – NOMINAL**  
WIDTH DIMENSIONS ARE EXACT



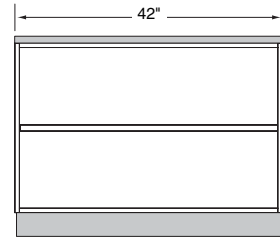
**30"W – NOMINAL**  
WIDTH DIMENSIONS ARE EXACT



**32"W – NOMINAL**  
WIDTH DIMENSIONS ARE EXACT

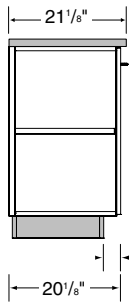


**36"W – NOMINAL**  
WIDTH DIMENSIONS ARE EXACT

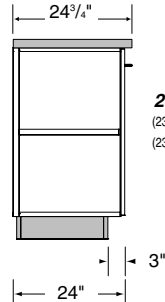


**42"W – NOMINAL**  
WIDTH DIMENSIONS ARE EXACT

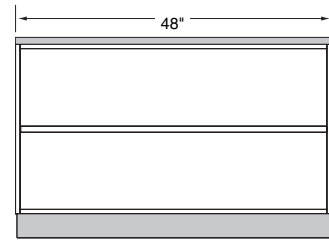
### BASE CABINET DEPTHS – Side View



**20"D – NOMINAL**  
(19 1/2" ACTUAL DEPTH DIMENSION W/O DOOR)  
(20 1/8" ACTUAL DEPTH DIMENSION W/DOOR)



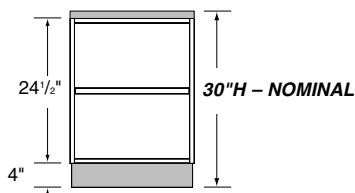
**24"D – NOMINAL**  
(23 1/2" ACTUAL DEPTH DIMENSION W/O DOOR)  
(23 1/4" ACTUAL DEPTH DIMENSION W/DOOR)



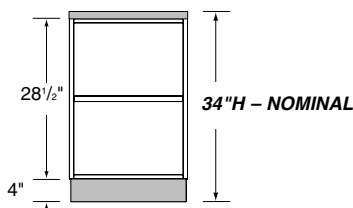
**48"W – NOMINAL**  
WIDTH DIMENSIONS ARE EXACT

### BASE CABINET HEIGHTS – Front View

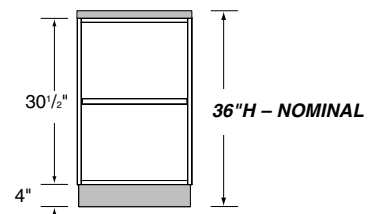
Nominal height includes a 4" high base and 1 1/2" thick countertop



**30"H – NOMINAL**



**34"H – NOMINAL**

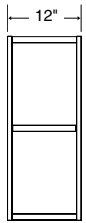


**36"H – NOMINAL**

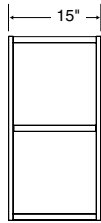
ADA BASE CABINET

## WALL CABINET DIMENSIONS

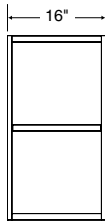
### WALL CABINET WIDTHS – Front View



**12"W – NOMINAL**  
WIDTH DIMENSIONS ARE EXACT



**15"W – NOMINAL**  
WIDTH DIMENSIONS ARE EXACT



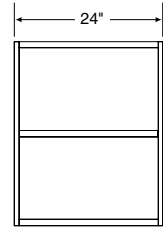
**16"W – NOMINAL**  
WIDTH DIMENSIONS ARE EXACT



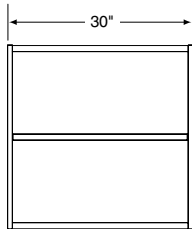
**18"W – NOMINAL**  
WIDTH DIMENSIONS ARE EXACT



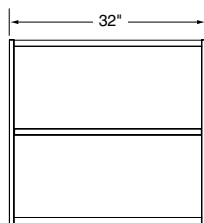
**21"W – NOMINAL**  
WIDTH DIMENSIONS ARE EXACT



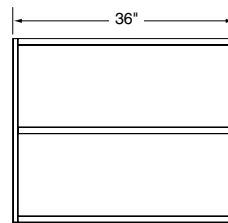
**24"W – NOMINAL**  
WIDTH DIMENSIONS ARE EXACT



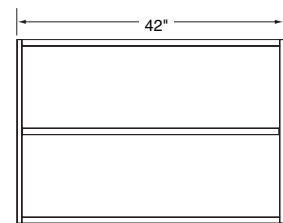
**30"W – NOMINAL**  
WIDTH DIMENSIONS ARE EXACT



**32"W – NOMINAL**  
WIDTH DIMENSIONS ARE EXACT

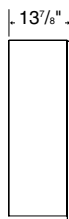


**36"W – NOMINAL**  
WIDTH DIMENSIONS ARE EXACT

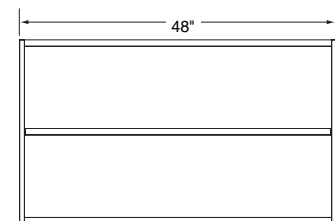


**42"W – NOMINAL**  
WIDTH DIMENSIONS ARE EXACT

### WALL CABINET DEPTH – Side View

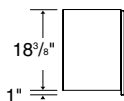


**14"D – NOMINAL**  
(13 1/2" ACTUAL DEPTH DIMENSION W/O DOOR)  
(13 1/4" ACTUAL DEPTH DIMENSION W/DOOR)

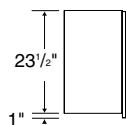


**48"W – NOMINAL**  
WIDTH DIMENSIONS ARE EXACT

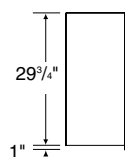
### WALL CABINET HEIGHTS – Side View



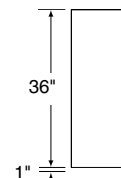
**18"H – NOMINAL**



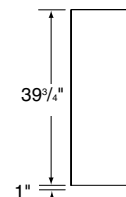
**24"H – NOMINAL**



**30"H – NOMINAL**



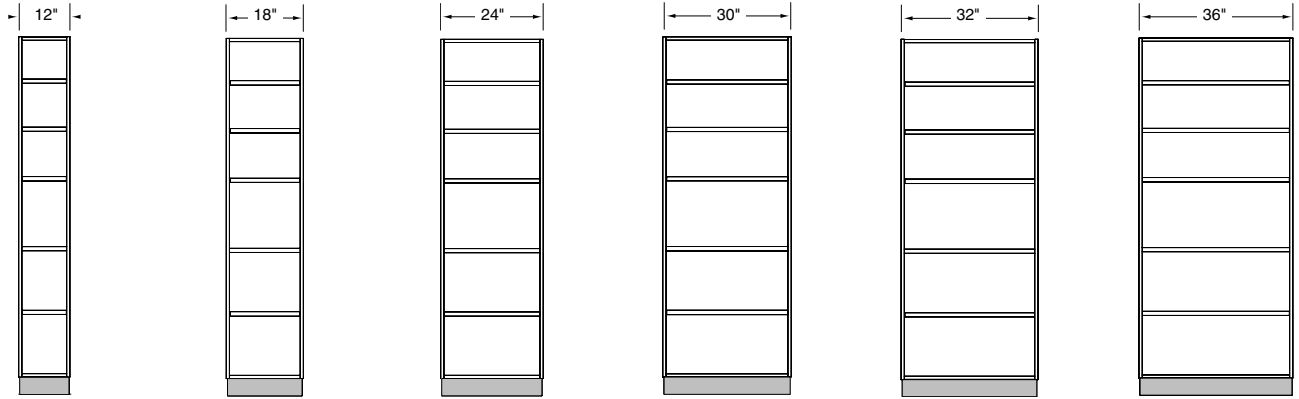
**36"H – NOMINAL**



**40"H – NOMINAL**

## TALL CABINET DIMENSIONS

**TALL CABINET WIDTHS – Front View**  
Fixed shelf is at 36"H.



**12"W – NOMINAL**  
WIDTH DIMENSIONS ARE EXACT

**18"W – NOMINAL**  
WIDTH DIMENSIONS ARE EXACT

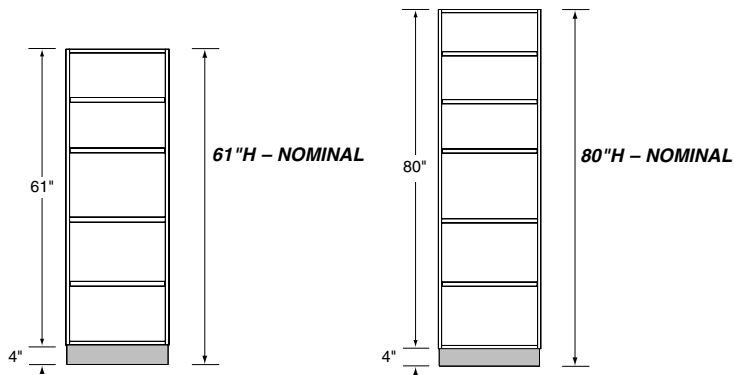
**24"W – NOMINAL**  
WIDTH DIMENSIONS ARE EXACT

**30"W – NOMINAL**  
WIDTH DIMENSIONS ARE EXACT

**32"W – NOMINAL**  
WIDTH DIMENSIONS ARE EXACT

**36"W – NOMINAL**  
WIDTH DIMENSIONS ARE EXACT

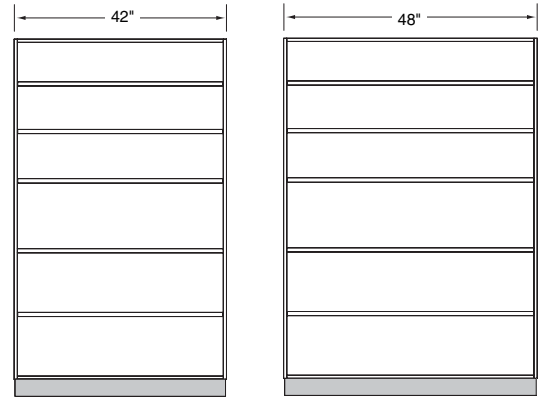
**TALL CABINET HEIGHTS – Front View**  
Nominal height includes a 4" high base



**61"H – NOMINAL**

80"

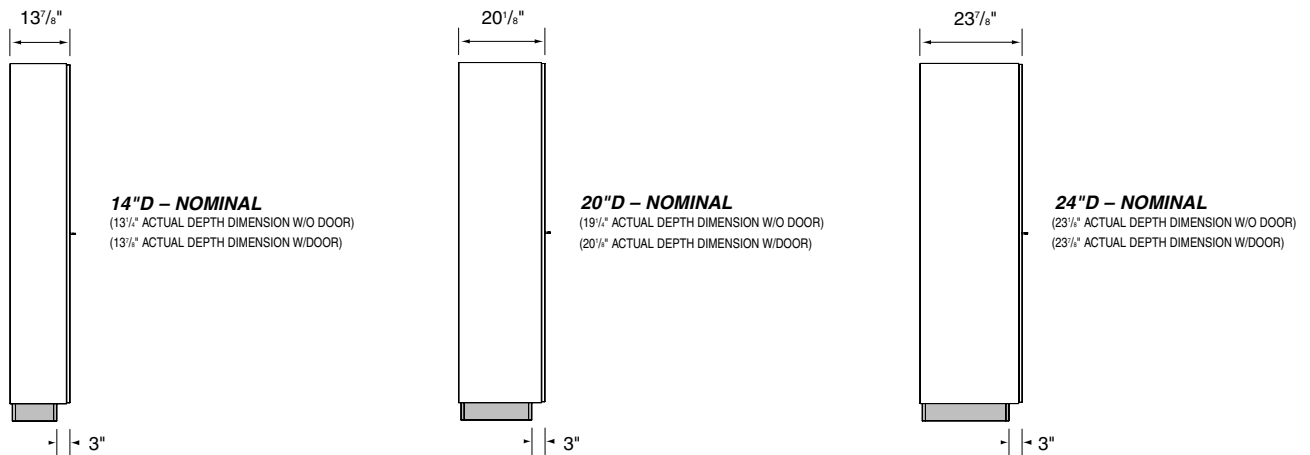
**80"H – NOMINAL**



**42"W – NOMINAL**  
WIDTH DIMENSIONS ARE EXACT

**48"W – NOMINAL**  
WIDTH DIMENSIONS ARE EXACT

**TALL CABINET DEPTHS – Side View**



**14"D – NOMINAL**  
(13 1/2" ACTUAL DEPTH DIMENSION W/O DOOR)  
(13 3/4" ACTUAL DEPTH DIMENSION W/DOOR)

**20"D – NOMINAL**  
(19 1/2" ACTUAL DEPTH DIMENSION W/O DOOR)  
(20 1/4" ACTUAL DEPTH DIMENSION W/DOOR)

**24"D – NOMINAL**  
(23 1/4" ACTUAL DEPTH DIMENSION W/O DOOR)  
(23 3/4" ACTUAL DEPTH DIMENSION W/DOOR)

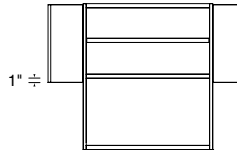
## SPECIALTY WALL CABINETS

### MICROWAVE CABINET

**32"W – NOMINAL** (WIDTH DIMENSIONS ARE EXACT)  
**14"D – NOMINAL** (DEPTH DIMENSIONS W/O MICROWAVE SHELF ARE EXACT)

AVAILABLE 36"H AND 40"H  
**36"H – NOMINAL** (HEIGHT DIMENSIONS ARE EXACT)  
**40"H – NOMINAL** (39 1/2" ACTUAL HEIGHT DIMENSIONS)

100360 - Front View



OPENING – 12"D  
 DOOR EXTENDS 1"  
 BELOW FIXED SHELF



(36"H SHOWN)

CABINET OPENING FOR MICROWAVE IS:

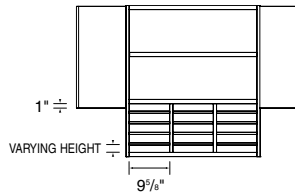
30 1/2"W x 15 1/2"H x 15 1/2"D  
 (MICROWAVE SHELF IS 15 1/2"D)

### FORM HOLDER CABINET

**32"W – NOMINAL** (WIDTH DIMENSIONS ARE EXACT)  
**14"D – NOMINAL** (DEPTH DIMENSIONS ARE EXACT)

AVAILABLE 36"H AND 40"H  
**36"H – NOMINAL** (HEIGHT DIMENSIONS ARE EXACT)  
**40"H – NOMINAL** (39 1/2" ACTUAL HEIGHT DIMENSIONS)

100366 - Front View  
 (36"H SHOWN)



OPENING – 12"D  
 1/2" REMOVABLE  
 HORIZONTAL DIVIDERS  
 DOOR EXTENDS 1"  
 BELOW FIXED SHELF



(40"H SHOWN)

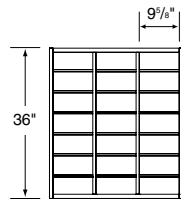
36"H – FIFTEEN OPENINGS

40"H – TWELVE OPENINGS

### MAIL STORAGE CABINET

**32"W – NOMINAL** (WIDTH DIMENSIONS ARE EXACT)  
**14"D – NOMINAL** (13 1/2" ACTUAL DEPTH DIMENSIONS)

100340 - Front View



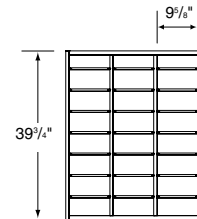
VARYING HEIGHTS  
 (APPROX. 5")  
**36"H – NOMINAL**  
 TWENTY-ONE OPENINGS  
 OPENING – 12"D  
 1/2" REMOVABLE  
 HORIZONTAL DIVIDERS



### MAIL STORAGE CABINET

**32"W – NOMINAL** (WIDTH DIMENSIONS ARE EXACT)  
**14"D – NOMINAL** (13 1/2" ACTUAL DEPTH DIMENSIONS)

100341 - Front View



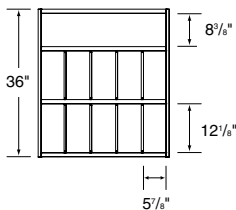
VARYING HEIGHTS  
 (APPROX. 5")  
**40"H – NOMINAL**  
 TWENTY-FOUR OPENINGS  
 OPENING – 12"D  
 1/2" REMOVABLE  
 HORIZONTAL DIVIDERS



### LATERAL ORGANIZER CABINET

**32"W – NOMINAL** (WIDTH DIMENSIONS ARE EXACT)  
**14"D – NOMINAL** (13 1/2" ACTUAL DEPTH DIMENSIONS)

100335 - Front View



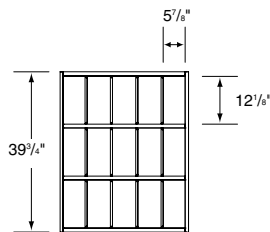
**36"H – NOMINAL**  
 ELEVEN OPENINGS  
 OPENING – 12"D  
 1/2" REMOVABLE  
 VERTICAL DIVIDERS



### LATERAL ORGANIZER CABINET

**32"W – NOMINAL** (WIDTH DIMENSIONS ARE EXACT)  
**14"D – NOMINAL** (13 1/2" ACTUAL DEPTH DIMENSIONS)

100336 - Front View



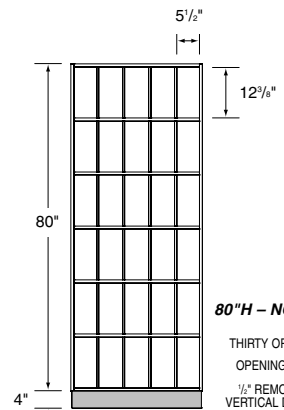
**40"H – NOMINAL**  
 FIFTEEN OPENINGS  
 OPENING – 12"D  
 1/2" REMOVABLE  
 VERTICAL DIVIDERS



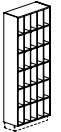
### LATERAL ORGANIZER CABINET

**32"W – NOMINAL** (WIDTH DIMENSIONS ARE EXACT)  
**14"D – NOMINAL** (13 1/2" ACTUAL DEPTH DIMENSIONS)

100430 - Front View



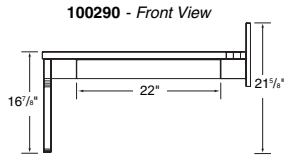
**80"H – NOMINAL**  
 THIRTY OPENINGS  
 OPENING – 12"D  
 1/2" REMOVABLE  
 VERTICAL DIVIDERS



## SPECIALTY WALL CABINETS

**PRESCRIPTION DESK**

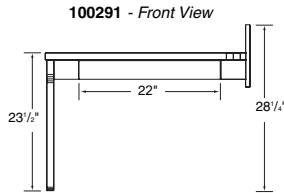
**34"W – NOMINAL** (34<sup>1</sup>/<sub>8</sub>" ACTUAL WIDTH DIMENSION)  
**16"D – NOMINAL** (16<sup>1</sup>/<sub>8</sub>" ACTUAL DEPTH DIMENSION)  
**17"H – NOMINAL** (16<sup>1</sup>/<sub>8</sub>" ACTUAL HEIGHT DIMENSION)



DRAWER IS 24"W

**PRESCRIPTION DESK**

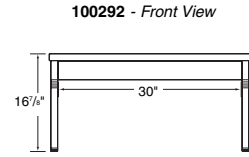
**34"W – NOMINAL** (34<sup>1</sup>/<sub>8</sub>" ACTUAL WIDTH DIMENSION)  
**23"D – NOMINAL** (23<sup>1</sup>/<sub>8</sub>" ACTUAL DEPTH DIMENSION)  
**23"H – NOMINAL** (23<sup>1</sup>/<sub>8</sub>" ACTUAL HEIGHT DIMENSION)



DRAWER IS 24"W

**PRESCRIPTION DESK**

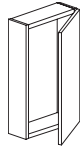
**34"W – NOMINAL** (34<sup>1</sup>/<sub>8</sub>" ACTUAL WIDTH DIMENSION)  
**17"D – NOMINAL** (16<sup>1</sup>/<sub>8</sub>" ACTUAL HEIGHT DIMENSION)  
**17"H – NOMINAL** (16<sup>1</sup>/<sub>8</sub>" ACTUAL HEIGHT DIMENSION)



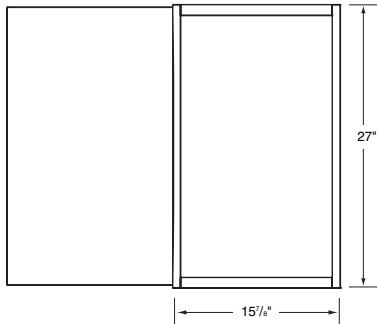
DRAWER IS 30"W

**LASER CABINET**

**16"W – NOMINAL** (15<sup>1</sup>/<sub>8</sub>" ACTUAL WIDTH DIMENSION)  
**5"D – NOMINAL** (5<sup>1</sup>/<sub>8</sub>" ACTUAL DEPTH DIMENSION)  
**27"H – NOMINAL** (HEIGHT DIMENSIONS ARE EXACT)

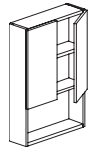


**100374 - Front View**

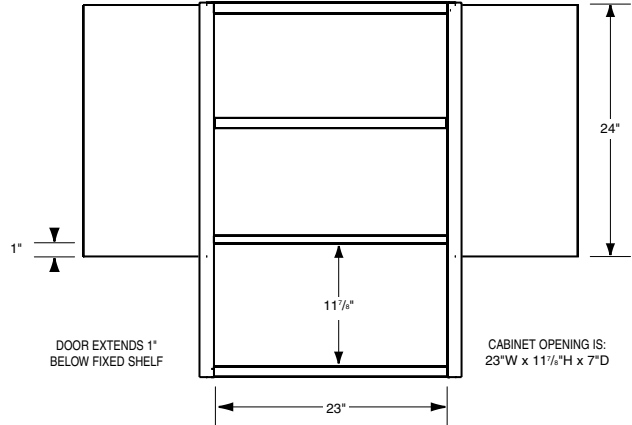


**TOILET WALL CABINET**

**24"W – NOMINAL** (WIDTH DIMENSIONS ARE EXACT)  
**7"D – NOMINAL** (6<sup>1</sup>/<sub>8</sub>" ACTUAL DEPTH DIMENSION W/O DOOR)  
**36"H – NOMINAL** (36" ACTUAL HEIGHT DIMENSION)

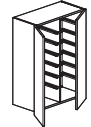


**100357 - Front View**

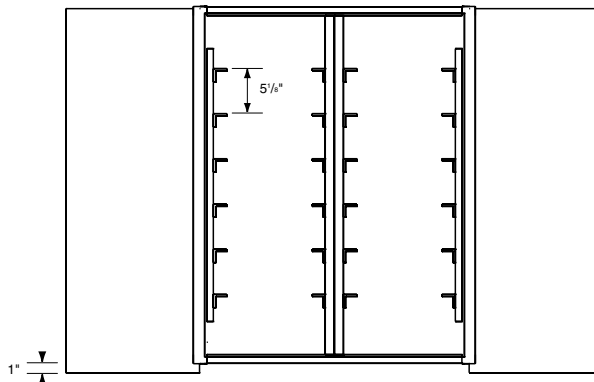


**MOLD STORAGE CABINET**

**30"W – NOMINAL** (30" ACTUAL WIDTH DIMENSION)  
**14"D – NOMINAL** (DEPTH DIMENSIONS ARE EXACT)  
**40"H – NOMINAL** (40" ACTUAL HEIGHT DIMENSION)

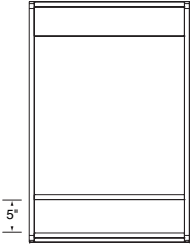
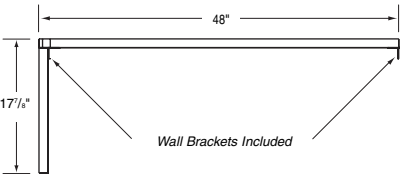
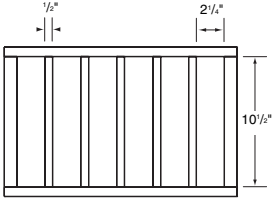
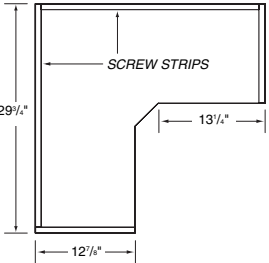
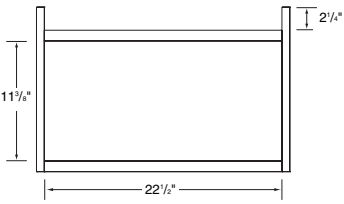
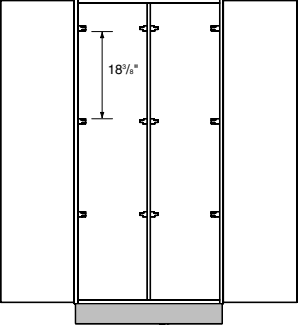
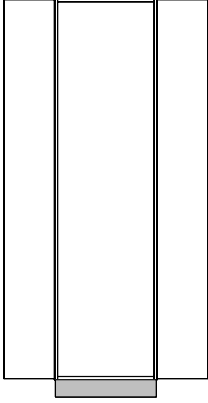


**100370 - Front View**



DOOR EXTENDS 1" BELOW FIXED SHELF

CABINET CAN BE INVERTED TO FIT SIEMENS AND VARIAN TRAYS

<p><b>TELEPHONE CABINET</b>  <b>24"W – NOMINAL</b> (WIDTH DIMENSIONS ARE EXACT)  <b>14"D – NOMINAL</b> (13<sup>1</sup>/<sub>2</sub>" ACTUAL DEPTH DIMENSION)  <b>36"H – NOMINAL</b> (36" ACTUAL HEIGHT DIMENSION)</p> <p><b>100371 - Front View</b></p>  <p>BOTTOM OPENING IS:          23"W x 5"H x 13<sup>1</sup>/<sub>2</sub>"D</p>	<p><b>DRESSING BENCH</b>  <b>48"W – NOMINAL</b> (48" ACTUAL WIDTH DIMENSION)  <b>24"D – NOMINAL</b> (DEPTH DIMENSIONS ARE EXACT)  <b>18"H – NOMINAL</b> (17<sup>1</sup>/<sub>2</sub>" ACTUAL HEIGHT DIMENSION)</p> <p><b>100900 - Front View</b></p>  <p>Wall Brackets Included</p>	
<p><b>RECORDS PASS-THROUGH</b>  <b>18"W – NOMINAL</b> (18<sup>1</sup>/<sub>2</sub>" ACTUAL WIDTH DIMENSION)  <b>12"D – NOMINAL</b> (12<sup>1</sup>/<sub>2</sub>" ACTUAL DEPTH DIMENSION)  <b>12"H – NOMINAL</b> (12" ACTUAL HEIGHT DIMENSION)</p> <p><b>100373 - Front View</b></p> 	<p><b>CORNER SHELF</b>  <b>30"W – NOMINAL</b> (29<sup>1</sup>/<sub>2</sub>" ACTUAL WIDTH DIMENSIONS)  <b>30"D – NOMINAL</b> (29<sup>1</sup>/<sub>2</sub>" ACTUAL DEPTH DIMENSIONS)  <b>1"H – NOMINAL</b> (3<sup>1</sup>/<sub>4</sub>" ACTUAL HEIGHT DIMENSION)</p> <p><b>100375 - Front View</b></p>  <p>SCREW STRIPS</p>	<p><b>WALL SHELF</b>  <b>24"W – NOMINAL</b> (22<sup>1</sup>/<sub>2</sub>" ACTUAL WIDTH DIMENSIONS)  <b>11"D – NOMINAL</b> (10<sup>1</sup>/<sub>2</sub>" ACTUAL DEPTH DIMENSIONS)  <b>16"H – NOMINAL</b> (15<sup>1</sup>/<sub>2</sub>" ACTUAL HEIGHT DIMENSION)</p> <p><b>100372 - Front View</b></p> 
<p><b>CONE STORAGE CABINET</b>  <b>30"W – NOMINAL</b> (30" ACTUAL WIDTH DIMENSION)  <b>24"D – NOMINAL</b> (23<sup>1</sup>/<sub>2</sub>" ACTUAL DEPTH DIMENSION)  <b>61"H – NOMINAL</b> (HEIGHT DIMENSIONS ARE EXACT)</p> <p><b>100420 - Front View</b></p>  <p>CABINET CAN BE INVERTED TO          FIT SIEMENS AND VARIAN TRAYS</p>	<p><b>SCOPE CABINET</b>  <b>24"W – NOMINAL</b> (WIDTH DIMENSIONS ARE EXACT)  <b>14"D – NOMINAL</b> (13<sup>1</sup>/<sub>2</sub>" ACTUAL DEPTH DIMENSION)  <b>89"H – NOMINAL</b> (88<sup>1</sup>/<sub>2</sub>" ACTUAL HEIGHT DIMENSION)</p> <p><b>100410 - Front View</b></p>  <p>SCOPE MOUNTING BRACKET          AND SHELF BY OTHERS</p>	