

# HEADWALLS - TACKBOARDS

SPECIFICATIONS |  techline.

## FABRIC PANELS

### SAMPLE

Quantity: _____	↑ ↓
Fabric Series#: _____ Color#: _____	
Raise Panel? Y ___ N ___	

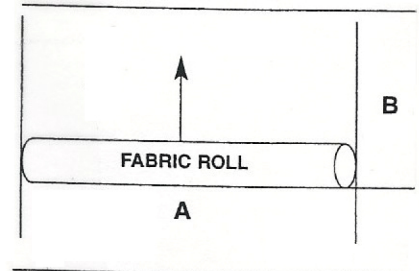
← \_\_\_\_\_ →

## PRODUCT DESCRIPTION

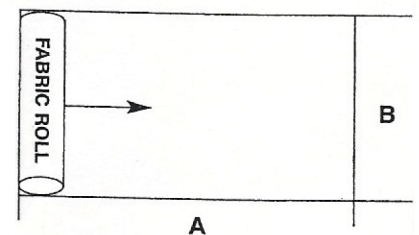
### Standard Fabric Panel

- Dimension A maximum 48"
- Dimension B maximum 96"

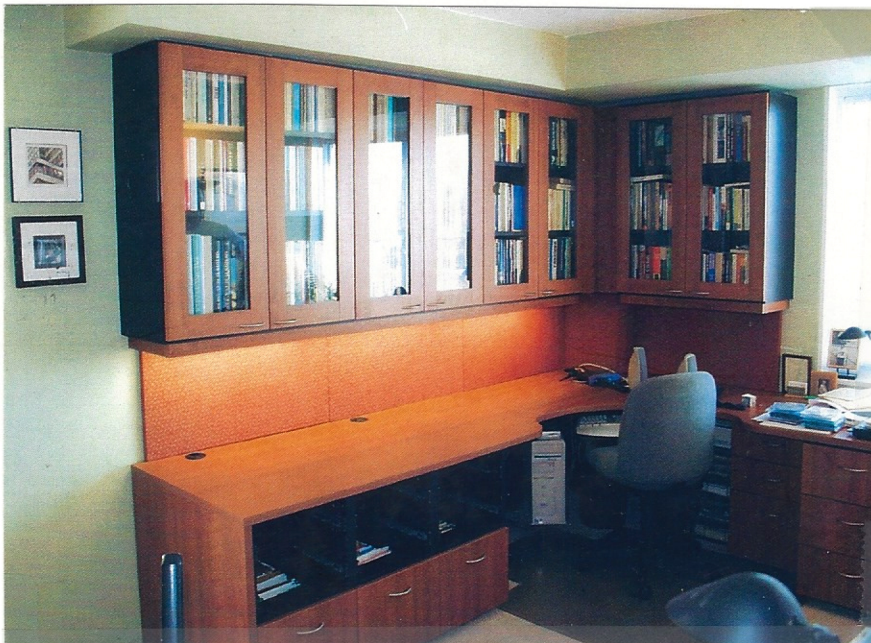
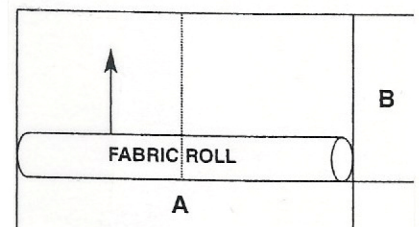
F1



F2



F3



## Home Office

Project: Study room with high visibility  
Connect upper and lower cabinetry  
with contrasting function and wire concealment,  
coordinated with office seating



## Showroom – Display

See Fabric Selection for Finishes

## Custom Sized Tack Boards for Headwalls

### General – Application

- Headwall in offices: Description  
That section of wall between upper and lower cabinetry above work surface.
- Headwall in medical: Description  
That area of wall beyond and above the head of the bed in a hospital, which contains the hook-ups for oxygen, suction, alternate power, etc.

### Details – Product Information

- Sizing and finishing choice by owner.
- Fabric selection can be coordinated with the office chair.
- Options - Composition board (1/2" thick) with wrapping selection
  - Composition board (1" thick) with wrapping selection to include channels, on backside, to conceal under cabinet lighting power cord.
- Connecting the upper cabinets with the cabinetry and work surface below provides the appearance of a connected system of contemporary furniture similar to that of a hutch/base unit or finished headwall between upper/lower cabinets above countertop in a kitchen area.
- Functional for attaching objects with push pins.
- Contributes to sound absorption. Sound soak board optional.

### Specifications – Panels Sizing

- F1 – Substructure raw material available in 48" x 96" sheets. A material without a vertical repeating pattern, but has a vertical grain is limited to a maximum width of 44" by the measured height. 1/4" tolerance at top and bottom is allowed for taking in and out, attached with two part Velcro.
- F2 – Non pattern, non grained material limited horizontally (length) by size of composition board. Maximum size horizontally – 92". Maximum single panel height – 44" or determined by the measured height.
- F3 – Matching patterns vertically that have a repeat limits the width size of each panel. Ex: the measured width is 102" which would mean 3 panels at 34" wide by the height of matching the pattern to fit the measured height.

Each panel is fully wrapped, applied with 100% surface coverage with contact cement.  
Commercial Velcro attachment affixed to each panel every 8-12" in both directions on backside.

### Material – Samples at Showroom

Fabric – Any seating type material  
Cork – Seven (7) styles



**CORKBOARD MATERIAL**

	TACKBOARD	CODE	MODEL NO.	PKG	DESCRIPTION	UN.
1	CORKSTONE	WLTAC	COR 306006	5	TACKBOARD WALL TILE	
2					30CM X 60CM X 6MM	
3					12" X 24" X 1/4"	
4						
5	COUNTRY	WLTAC	COU 306006	5	TACKBOARD WALL TILE	
6					30CM X 60CM X 6MM	
7					12" X 24" X 1/4"	
8						
9	MIDNIGHT	WLTAC	MID 306006	5	TACKBOARD WALL TILE	
10					30CM X 60CM X 6MM	
11					12" X 24" X 1/4"	
12						
13	FINE	SHCOM	CR117-060	1	COMPOSITION CORK BULLETIN	
14					24" X 36" X 1/4"	
15						
	ACCOUNTING	CODE	MODEL NO.	PKG	DESCRIPTION	UN.
16	HARMONY	WLACO	HAR 306013	5	ACCOUSTICAL WALL TILE	
17					300MM X 600MM X 13 MM	
18					11 3/4" X 23 1/2" X 1/2"	
19						
20	LISBON	WLACO	LIS 306013	5	ACCOUSTICAL WALL TILE	
21					30CM X 60CM X 13 MM	
22					12" X 24" X 1/2"	
23						
24	SPECKLED	WLACO	SPE 306013	5	ACCOUSTICAL WALL TILE	
25					300MM X 600MM X 13 MM	
26					11 3/4" X 23 1/2" X 1/2"	
27						
28						
29						
	RUBBER	CODE	MODEL NO.	PKG	DESCRIPTION	UN.
30						
31						
32						
33						
34						
35						
36						

NOTE: SAMPLES LOANED \_\_\_\_\_ WARRANTY \_\_\_\_\_ 5 YEAR \_\_\_\_\_

TYPICAL SPACE: \_\_\_\_\_

EDGING: \_\_\_\_\_

MOUNTING: \_\_\_\_\_ 1/2" HOMASOTE BOARD \_\_\_\_\_



TECHLINE STUDIOS

12221 Parklawn Drive # 100

Rockville, MD 20852

PH: (301) 770-1779 FAX: (301) 770-1779

PROJECT: \_\_\_\_\_

SHEET NO: \_\_\_\_\_

DATE: / /

# CORKBOARD MATERIAL

